



[www.zumaxmedical.com](http://www.zumaxmedical.com)



## OMS2380/OMS2360 Dental Microscope

*For more information, please contact:*

**ZUMAX MEDICAL CO. LTD.**

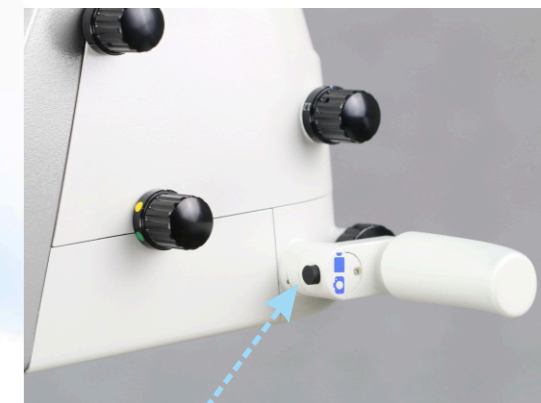
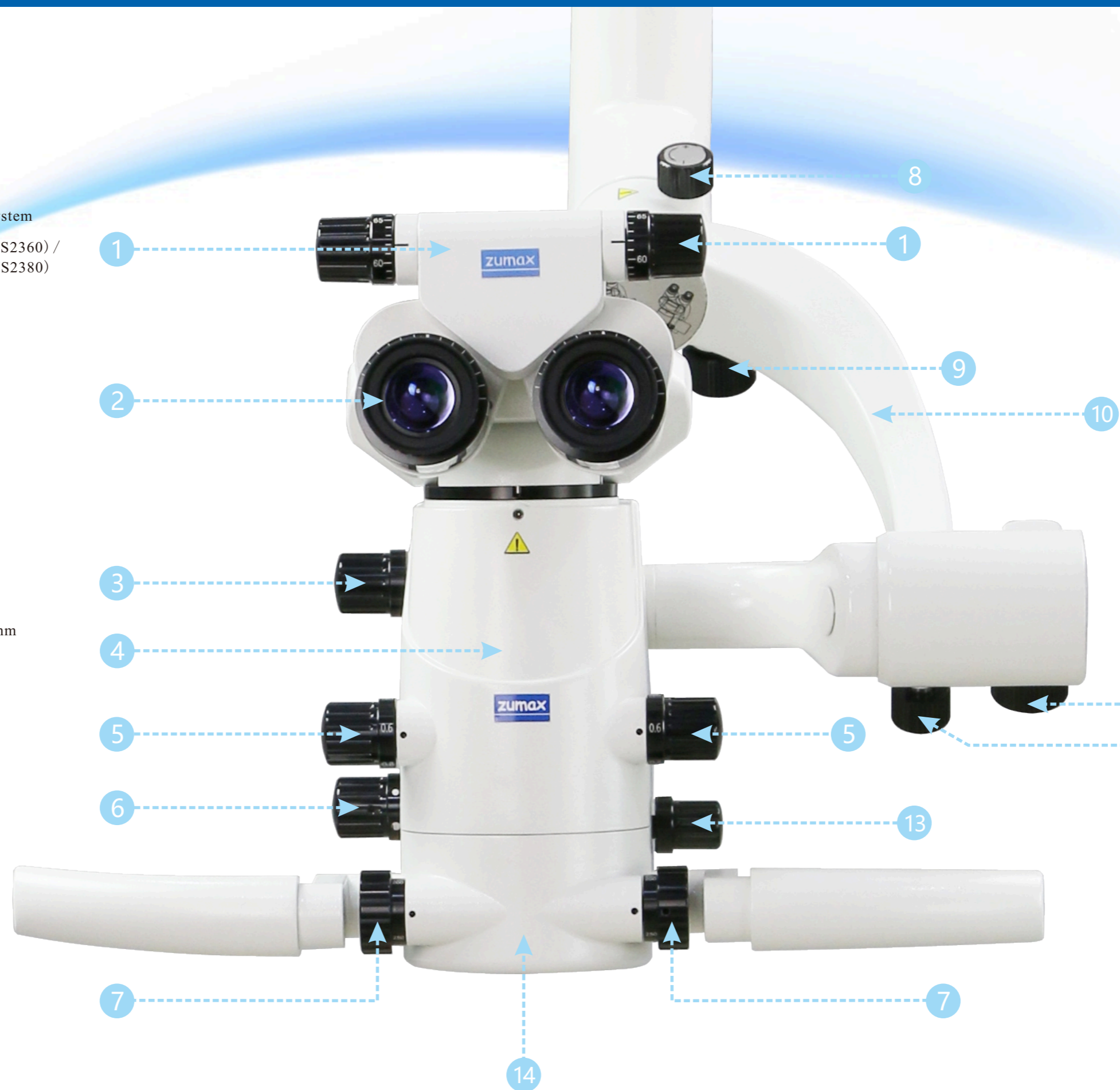
5 Zhiying Street, Suzhou New district,  
Suzhou, Jiangsu 215129, P.R. China  
Tel. +86(512)6665 0502  
Fax. +86(512)6665 0836  
[www.zumaxmedical.com](http://www.zumaxmedical.com)  
Email: [sales@zumaxmedical.com](mailto:sales@zumaxmedical.com)



**We Create Value  
For Our Customers  
With Our Service**



- 1 0°-180° inclinable binocular tube with PD adjusting knob
- 2 Wide Field Eyepieces
- 3 Integrated Laser Filter (optional)
- 4 Integrated Full HD Video Camera System
- 5 6-Step magnification adjustment (OMS2360) / Zoom magnification adjustment (OMS2380)
- 6 Illumination Spots and Filters
- 7 Fine Focusing Knob
- 8 L/R Friction Knob
- 9 L/R Balancing Knob
- 10 120° Balancing Arm
- 11 F/B Balancing Knob
- 12 F/B Friction Knob
- 13 Brightness Intensity Control Knob
- 14 VarioDist Objective Lens Variable Working Distance 200-450 mm
- 15 Photo & Video Button





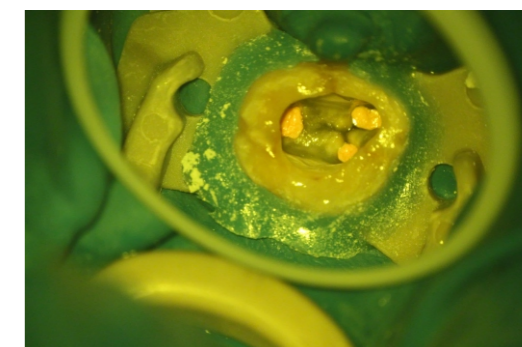
## Integrated LED Illumination

LEDs present many advantages over Halogen or Xenon light sources, including lower energy consumption, longer lifetime, improved robustness, and greater durability and reliability. In addition, LEDs operate at a safe, low voltage, instead of the 25K volts commonly found in Xenon lighting; they but also have a light temperature characteristic of natural daylight. Daylight enhances visualization and allows much better photography and documentation and makes it absolutely natural.



Without filter

## Illumination Spots and Filters



Yellow filter



Halogen light



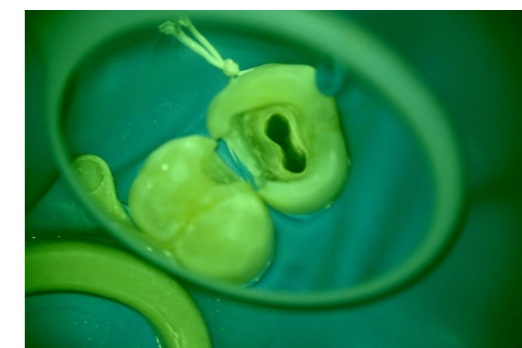
LED light

### Integrated laser filters (optional)

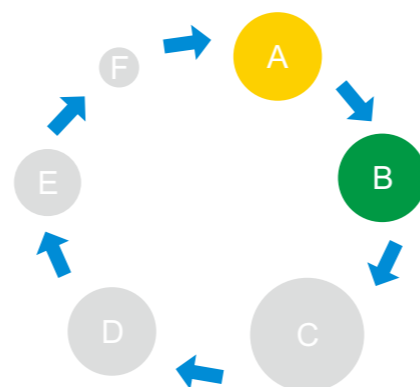
- Argon: 488~514nm
- Diode: 660nm
- Diode: 800~830nm
- Diode: 980nm
- Erbium: 2780~2940nm
- NdYAG: 1064nm
- CO<sub>2</sub>: 10600nm

### Integrated Yellow & Green Filter

Yellow filter: Prevents premature curing of composite.  
Green filter: Improves detail visibility by enhancing the (Red free) contrast of tissue with a strong blood supply.



Green filter (Red free)



- A. Yellow filter
- B. Green filter
- C. Large spot
- D. Middle spot
- E. Small spot
- F. Micro spot



### High Quality Optics

Optics made of imported glass from Germany to reduce the optical aberration. All lenses are multi-coated, anti-reflective, and apochromatic.



### 0°-180° Inclinable Binocular Tube

Inclinable binoculars feature the widest range of any binoculars for user comfort and enhanced ergonomics for surgeons of all heights.



### Eye PD Adjusting Knob

Accurate pupillary distance numbers have been marked on the knob; the dentist can conveniently and quickly adjust to any PD.



### Wide-Field Eyepieces

The wide-field eyepieces are easily pushed into the binocular tube and have integrated eyecups with stepless adjustment. The eyepieces are perfectly suited for surgeons who wish to work with their eyeglasses on, as eye refraction can easily be adjusted with a high range of +/- 7D diopter.



### Integrated VarioDist Objective Lens

Working distance range: 200 mm~450 mm; best suited for dentistry.



## One Hand Operation



Take Photo & Video by pressing the button



Adjust the fine focus knob



Adjust the brightness intensity



Change the magnification



### 6-Step Magnification Adjustment(OMS2360)

Example with 12.5x eyepieces:

Magnification Adjustment	0.3x	0.5x	0.8x	1.2x	2.0x	3.0x
Magnification	1.4x~24.2x					
Diameter of Field-of-View(mm)	151~9.2					

### Zoom Magnification Adjustment(OMS2380)

Example with 12.5x eyepieces:

Magnification Adjustment	0.4x~2.4x
Magnification	1.8x~19.4x
Diameter of Field-of-View(mm)	123.8~11.6



The magnification adjustment knobs on both sides of the microscope head allow the user to quickly and conveniently select the optimum magnification, from an overview of an entire arch to high magnification for precise and close examination of each case. 6-steps are best suited for dentistry as they cover all dental procedures.

### Balancing Arm

This Balancing Arm assures an ultra-smooth, fluid, and perfect balance during repositioning of the microscope. Even when external accessories have been attached, it balances the weight allowing smooth handling.

## External Photo and Video Solutions



Adapter for CANON/SONY/  
NIKON SLR Camera



Adapter for SONY/CANON/NIKON Cameras



Adapter for CANON/SONY  
Digital Camcorder



Easy 360/Easy 360 Plus Adapter  
for Mobile Phone

## Integrated Full HD Camera with SD Memory Card

► Zumax introduces outstanding HD resolution, superior color performance and fidelity, and is economical too. With outstanding performance, the camera delivers 1080/60P resolution from HDMI output with increased resolution up to 900 TVL.

► Optional recording system as option that has the ability to take a still image or a video and save all data onto an internal SD memory card. Review photos by mouse instantly.

► Multiple shooting methods, by Wireless Control Set or by Photo & Video Button on both handles



### Pendulum Function

This function allows the user to remain in an upright viewing position, by changing the direction of the optic pod without changing the direction of the binocular head. this enhances user comfort and ergonomics.



Binocular Rotation Ring

+



Binocular Extender

or



Extender & Beam Splitter  
(20% : 80% or 50% : 50%)



25° Right Inclination



Vertical Position



25° Left Inclination

**MORE OPTIONAL ACCESSORIES**



**WirelessST Shutter Foot Pedal for SLR Camera/Mobile Phone**

This wireless WIFI enabled shutter remote control by footpedal for SLR cameras allows shutter release without touching the camera. Therefore, problems of stability control, jerky movements, and vibration during photography are eliminated.



**Laser Filter**

This filter can be used for the following laser wavelengths :  
 Diode Laser: 780-830 nm  
 Nd-YAG: 1064 nm  
 Er-YAG: 2940 nm



**Dual Iris Diaphragm**

Dual iris diaphragm is used to increase the depth of field.



Easy360 Mobile Phone Adapter



Easy360 Plus Mobile Phone Adapter



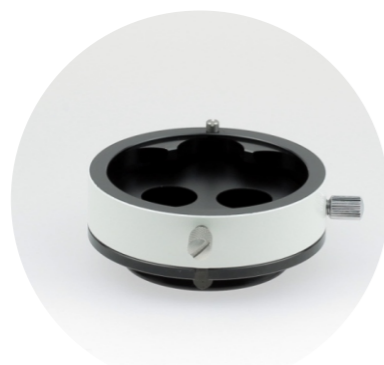
Rota 360 Digital Camera Adapter



NIKON/SONY/CANON Digital Camcorder Adapter



NIKON/SONY/CANON Digital Camera Adapter



Binocular Rotation Ring



Flashlight Adapter



Extender & Beam Splitter  
(20%:80% or 50%:50%)



Binocular Extender





### OMS2380 Standard-Level

- ▶ "H" floor stand with wheels
- ▶ 0-180° inclinable binocular tube with PD adjusting device
- ▶ Integrated LED illumination
- ▶ 600mm Second Arm
- ▶ Balancing Arm
- ▶ Integrated yellow & green filters and illumination spots
- ▶ Zoom magnification changer
- ▶ VarioDist Lens 200-450 mm
- ▶ 12.5x eyepieces

### OMS2380 Professional-Level

- ▶ OMS2380 Standard-Level
- ▶ Integrated full HD camera with SD memory system
- ▶ 30° Binocular Extender & Beam Splitter Combination
- ▶ Rotation Ring

#### Optional

- ▶ Digital Camera or Camcorder Adapter (SONY/NIKON/CANON) or Easy 360/Easy 360 Plus Mobile Phone Adapter
- ▶ Wireless foot pedal for digital camera
- ▶ Inner power supply for digital camera, camcorder, or mobile phone



### OMS2360 Standard-Level

- ▶ "H" floor stand with wheels
- ▶ 0-180° inclinable binocular tube with PD adjusting device
- ▶ Integrated LED illumination
- ▶ 600mm Second Arm
- ▶ Balancing Arm
- ▶ Integrated yellow & green filters and illumination spots
- ▶ 6-step magnification changer
- ▶ VarioDist Lens 200-450 mm
- ▶ 12.5x eyepieces

### OMS2360 Middle-Level

- ▶ OMS2360 Standard-Level
- ▶ Integrated full HD camera with SD memory system
- ▶ 30° Binocular Extender & Beam Splitter Combination
- ▶ Rotation Ring

#### Optional

- ▶ Digital Camera or Camcorder Adapter (SONY/NIKON/CANON) or Easy 360/Easy 360 Plus Mobile Phone Adapter
- ▶ Wireless foot pedal for digital camera
- ▶ Inner power supply for digital camera, camcorder, or mobile phone



## TECHNICAL DATA

### Basic configuration

	OMS2380	OMS2360
Magnification system	Manual zoom system; with apochromatic 1:6 ratio; magnification factor $\gamma = 0.4\times - 2.4\times$	6-step manual magnification changer $\gamma = 0.3\times, 0.5\times, 0.8\times, 1.2\times, 2\times, 3\times$
Tubes	0°-180° inclinable binocular tube with PD adjusting knob, $f=170$ mm	
Eyepieces	12.5x wide-field eyepieces; also suitable for eyeglass wearers	
Focus	VarioDist Objective Lens Variable working distance 200-450 mm	
Illumination System	Integrated LED illumination >70,000 Lux at working distance 250 mm Large light spot diameter: $\Phi 87$ mm at working distance 250 mm Yellow and green integrated filter	
Handgrip	360° Rotatable Handgrip, can be sterilized	
Mount mobility	Balancing Arm	
Construction	Floor Stand with "H" shaped base, 632x632 mm	

### Optional configuration

Eyepieces	10x/16x/20x wide-field eyepieces, also suitable for eyeglass wearers
Integrated Video System	64G Memory Card Wireless photo&video set for integrated full HD video camera (optional)
External Video Solutions	Adapter for Canon/Sony/Nikon SLR cameras Rota 360° adapter for Canon/Sony/Nikon SLR cameras Adapter for Sony Alpha series/Canon/Nikon Mirrorless cameras Adapter for Canon/Sony Digital Camcorders Easy 360° /Easy 360° Plus Adapter for Mobile Phone Binocular Rotation Ring 30° binocular extender and beam splitter combination (20%:80% or 50%:50%) WirelessST Shutter foot control for SLR camera Wireless Foot pedal for mobilephone Inner power supply for Canon/Sony/Nikon SLR cameras or Camcorders Inner power supply for Mobile Phone
Optics	Double Iris Diaphragm Integrated Laser Filter External Laser Filter
Construction	Ceiling Mount , Wall Mount