

zumax

Zumax Medical
Beyond Vision

LED ILLUMINATION



Start your micro-surgery with ZUMAX
OMS2350 € SURGICAL MICROSCOPE





Excellent optics

German lenses, multi coatings

Lens made of imported glass from Germany to reduce the optical aberration. All of the lenses are multi-coated and anti-reflective.



5-step magnification changer

The magnification changer knobs on both sides of the microscope body allow to select fast and conveniently the optimally matched magnifications for brilliant images from an overview of an entire arch to high magnification for precision and close inspection.



example with F=200mm lens and 12.5x eyepiece:

Magnification changer	0.4x	0.6x	1x	1.6x	2.5x
Magnification	4.3x	6.8x	10.6x	16.9x	26.5x
Diameter of Field-of-view (mm)	52	33	21	13	8.3

LED Illumination

LED there be light

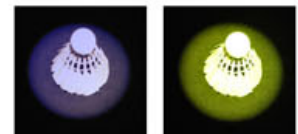
LEDs present many advantages over Halogen or Xenon light sources including lower energy consumption, longer lifetime, improved robustness and greater durability and reliability. In addition LEDs operate at a safe, low voltage, instead of the 250+ volts commonly found in xenon lighting, but also have a light temperature characteristic of natural daylight.



Cobalt and Red-free integrated Filter

Cobalt filter: used with fluorescein dye to view small lesions, abrasions, and foreign objects on the camera.

Red-free filter: Improves detail visibility by enhancing the contrast of tissue with a strong blood supply.



Cobalt Filter

Red-free Filter



Brightness Control Knob

Allows you to easily adjust the light intensity for any clinical situation.

Easy and Comfortable Operating

0° -180° inclinable binocular (option)

Inclinable binoculars feature the widest range of any binocular for user comfort.



Rotatable Handgrip

Rotatable handgrip can be adjusted to user's preferred position and enable the user to easily place the OMS in the desired position.



Assistant's microscope (option)



Stereo coobservation device

A stereo device which can be adjusted in three axes is available for coobservation. It can be fitted with either a straight or inclined tube and can be easily mounted on the microscope with the use of a beam splitter.

Image Device (option)

Integrated video camera system

The integrated video camera system provides still video and image to your patients and staffs.



Adapter for HD series device

1/3" CCD adapter;
SLR digital camera adapter for Canon, Nikon and Sony
Camcorder adapter for Sony, Canon
Sony NEX 5 Camera adapter



Technical Data

Compliance
ISO13485



Magnification system

- * 5-steps manual magnification changer
- * Five click stop positions
y=0. 4x, 0. 6x, 1. 0x, 1. 6x, 2.5x

Tube

- * 45° inclined binocular tube, f=170mm
- * 0° -180° inclinable binocular tube, f=170mm (Option)

Eyepieces

- * 12. 5x,(10x, 16x and 20x for option) widefield eyepieces and have integrated eyecups with stepless adjustment.

Magnification Range

e. g. with f=200mm lens and 12. 5x eyepiece:

Magnification/Field-of-view diameter:

4.3x 6.8x 10.6x 16.9x 26.5x

52mm 33mm 21mm 13mm 8.3mm

With selected components, the above magnification range can be shifted up or down.

Focusing

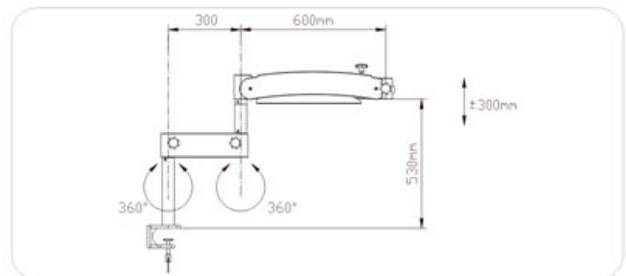
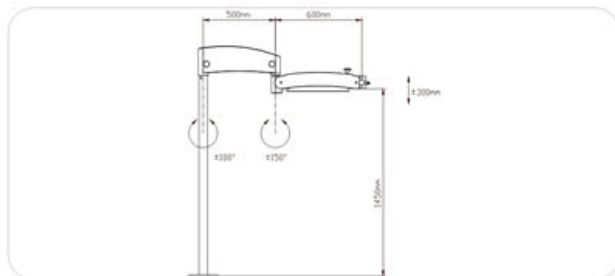
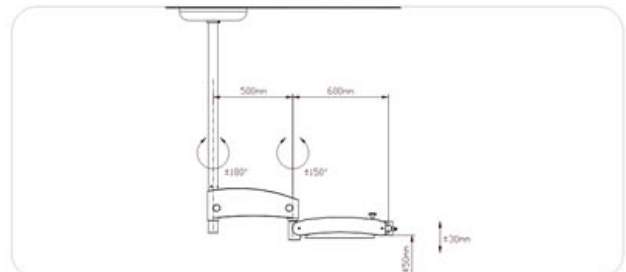
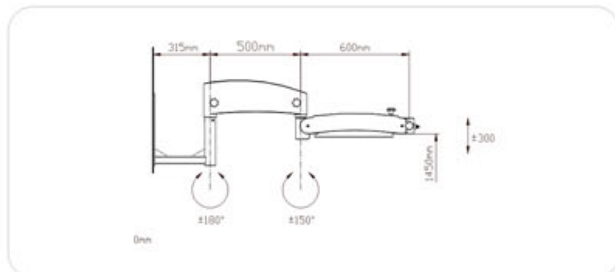
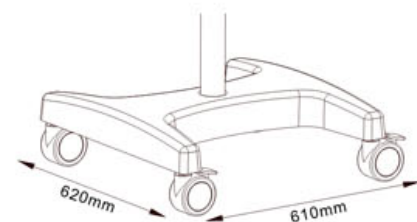
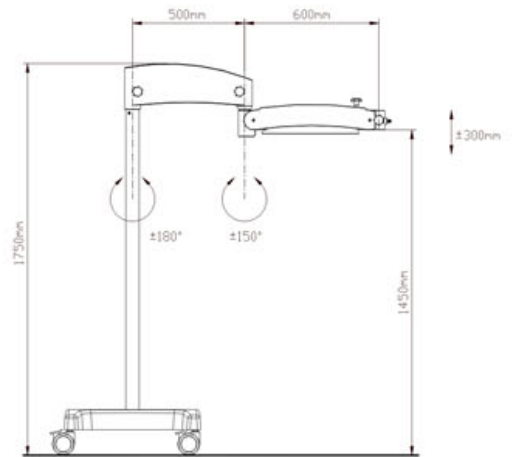
- * Manual, fine focusing range 13mm
- * 5 objective lenses for optional:
f=200mm (with fine focus),
f=250mm (with fine focus),
f=300mm, f=350mm, f=400mm

Illumination

- * Zumax LED Illumination, supplies bright, white and shadow-free light, >60, 000 hours lifetime
- * Cobalt, Red-free and UV integrated filter
- * Field of view diameter: 50mm with f=200mm objective lens

Net Weight

- * Floorstand 85kg
- * Ceiling Mount 55kg
- * Wall Mount 40kg
- * Tabletop Clip 20kg
- * Fixed Ground Mount 40kg



For more information, please contact:
ZUMAX MEDICAL CO., LTD.

36 Zhiying Street, Suzhou New District,
Suzhou, Jiangsu 215129, P. R. China
TEL. +81 512 6690 3235 FAX. +86 512 6690 9655
www.zumaxmedical.com Email: sales@zumaxmedical.cn